

# Executive Vice President for Specialty Services (Physician Executive)

Southcentral Foundation

4320

Anchorage Native Primary Care Center  
SOUTH CENTRAL FOUNDATION

BERKELEY SEARCH  
CONSULTANTS

Southcentral  
Foundation



"In Recognition of the Honorable Ted Stevens, U.S. Senator,  
and CIRI for their Commitment to our Journey to Wellness."

# About Southcentral Foundation



## Alaska Native People Shaping Health Care

Southcentral Foundation (SCF) is a 501(c)(3) nonprofit health care organization owned and operated by Alaska Native people and co-manages the regional and statewide Alaska Native Medical Center. SCF serves more than 70,000 Alaska Native and Native American customers throughout the state of Alaska through an integrated system of medical, behavioral, dental, and specialty services. They are known nationally and internationally for their unique approach to care.

## Southcentral Foundation's Nuka System of Care

Southcentral Foundation's Nuka System of Care (Nuka) is a relationship-based, customer-owned approach to transforming health care, improving outcomes, and reducing costs.

*Recipient of the 2011 and 2017 Malcolm Baldrige National Quality Award. Please visit SCF's website for more information about its [awards and recognition](#).*



## Vision

A Native Community that enjoys physical, mental, emotional and spiritual wellness.

## Mission

Working together with the Native Community to achieve wellness through health and related services.

## Goals

Shared Responsibility | Commitment to Quality  
Family Wellness | Operational Excellence

**SCF is internationally recognized for its relationship-based Nuka System of Care, which emphasizes relationships and partnership and collaboration.**

**Relationships:** When care teams build strong relationships with customer-owners, it helps providers better understand the health issues, social factors, and family history that customer-owners experience and gives them the opportunity to make healthier choices in their lives. In addition to these relationships, SCF employees build strong relationships with each other and SCF maintains a strong relationship with the community.

**Partnership and collaboration:** SCF works together with customer-owners as active partners. We are all on this journey together. Every aspect of SCF's Nuka System of Care is driven by customer-owners, from customer-ownership and health care delivery systems to facility design, process, quality improvement and infrastructure.

[Recommended Viewing: SCF leadership describe the mission.](#)

# About Anchorage, Alaska

With a population of nearly **300K residents**, Anchorage is home to nearly **40% of Alaska's population** and is the center of the state's urban life. Anchorage combines city amenities with the striking natural beauty that Alaska is famous for, including downtown salmon runs, miles of hiking trails, and the opportunity to see the Northern Lights. Located in Southern Alaska in the Cook Inlet region, Anchorage is also one of the warmest areas of the state with temperatures approaching **80 F in Summer**. Anchorage also has a major airport, making it a well-connected location with regular flights to many locations and just **three hours from Seattle**. Anchorage provides city life with easy access to hiking, camping, and fishing. Anchorage is the ideal hub to explore Alaska from.



There are **229 federally recognized tribes** and **20 Indigenous languages** spoken in the State of Alaska. The **Dena'ina**, Athabascan people, are the original inhabitants of Southcentral Alaska, and Anchorage is traditional Dena'ina homeland. In 2024, the Anchorage School District estimated 112 different languages spoken by students or their families at home. The top five languages apart from English were **Spanish, Samoan, Filipino, Hmong, and Yupik**.

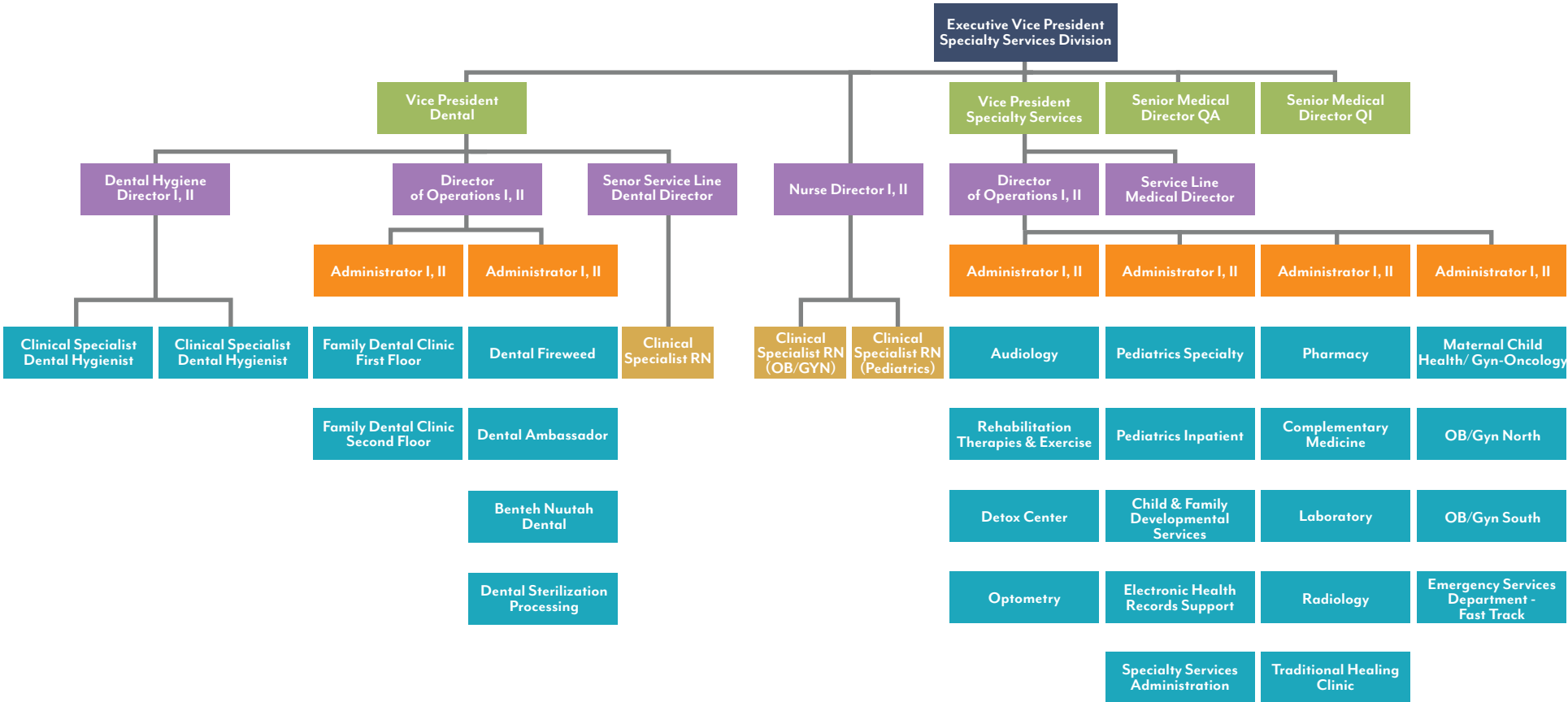
Check out [Visit Anchorage Alaska's website](#) for more highlights of the area.

# The Position

This position will serve as SCF's Senior Physician Executive and will work closely with SCF's President and CEO and ANMC's Chief Executive.

The Executive Vice President for Specialty Services reports directly to the President and CEO of Southcentral Foundation and plays a crucial role as the highest level physician member of the executive team. As part of the executive team, the EVP, Specialty Services shares responsibility for promoting SCF's vision, mission, and objectives, directing the performance and operation of the corporation, and ensuring SCF's financial sustainability. The EVP for Specialty Services works with the President and CEO, and the EVP team to develop and implement strategies to achieve SCF's short and long-term corporate goals and objectives. This position provides guidance to the Vice Presidents in the organization.

The EVP of Specialty Services works directly with the Alaska Native Medical Center (ANMC) Chief Executive and is a member of the ANMC Executive Management Team.



# Alaska Native Medical Center



The Alaska Native Medical Center (ANMC) is a comprehensive, vertically integrated medical center located in Anchorage, Alaska. It serves as the local and regional hospital for the Southcentral Region of Alaska. ANMC is co-managed by two partner organizations, Southcentral Foundation and Alaska Native Tribal Health Consortium (ANTHC).



Visit [Alaska's Native Medical Center's website](#) for more information.

# The Ideal Candidate

This position will serve as SCF's Senior Physician Executive and will work closely with SCF's President and CEO and ANMC's Chief Executive.

The 'Ideal Candidate' will possess the following experience, skills, and leadership attributes:

- Experience as a high level physician executive overseeing large scale and complex service lines and operations.
- Experience working in complex healthcare environments, including community-based healthcare organizations, accountable care organizations, large vertically integrated health systems, rural and remote healthcare, and/ or hospitals.
- Clinical and executive experience with SCF clinical areas (e.g. Family Practice, OB-GYN, Pediatrics, Psychiatry, Emergency Medicine, Dental, and/or Internist).
- A strong advocate of Southcentral Foundation and its mission.
- Collaborative leadership and the ability to work with internal and external stakeholders at various levels by cultivating relationships.
- Passion for a community owned healthcare model driven by the voice of customer owners.
- A strategic, innovative, creative, forward-thinking mindset to help push the organization forward.
- Strong success in improving systems and/or developing new programs and services with an eye on Quality Improvement and Quality Assurance.

## Education & Experience

- **MD** or **DO** degree with appropriate board certification and five **(5)** years of experience as a practicing physician.
- At least **(10)** years of progressively more responsible experience in corporate management, with at least five **(5)** years of this experience as a Vice President, Chief Medical Officer, Medical Director or other Director level position or any combination of training and experience that provides the required skills, knowledge and abilities.

# Compensation & Benefits

Southcentral Foundation offers a competitive compensation and benefits package, which is inclusive of but not limited to the following:

- Generous paid time off begins accruing upon hire at 5.2 weeks the first two years and moves to 6.5 weeks of PTO after two years of employment.
- 13 paid holidays with no waiting period.
- Employee wellness leave.
- Retirement program with a generous employer match of 4%.
- Comprehensive coverage includes 22 federal health care plan options for medical and optional dental and vision coverage.
- Flexible spending account, health savings account, and health reimbursement account options.
- 100% coverage of premiums for short-term disability, long-term disability, employee basic life insurance and accidental death and dismemberment (AD&D) insurance.
- Supplemental life and AD&D options for employee, spouse, and children. Supplemental long-term disability for highly compensated employees.

For a complete list of benefits, please view [Southcentral Foundation's benefits summary](#).

## How to Apply

Candidates are encouraged to express interest early in the process. This recruitment is considered “open” until filled. For first consideration, submit your application by **March 16, 2026**.

[Click HERE to apply](#)

### Alaska Native/American Indian Preference in Employment:

Pursuant to the Indian Self-Determination and Education Assistance Act, as amended, SCF pursues a policy of Alaska Native/American Indian preference in hiring, contracting, and training.

### For additional information, please contact:

Julia Morse | VP, Healthcare & Public Sector  
jmorse@berkeleysearch.com

OR

Phong Trieu | VP, Fulfillment Strategies  
ptrieu@berkeleysearch.com